

Timbales  
(Re y La)

# Sinfonía No 8

en Re Mayor K. 48

Wolfgang Amadeus Mozart  
Transcrip. Gory  
info@gory.jazztel.es

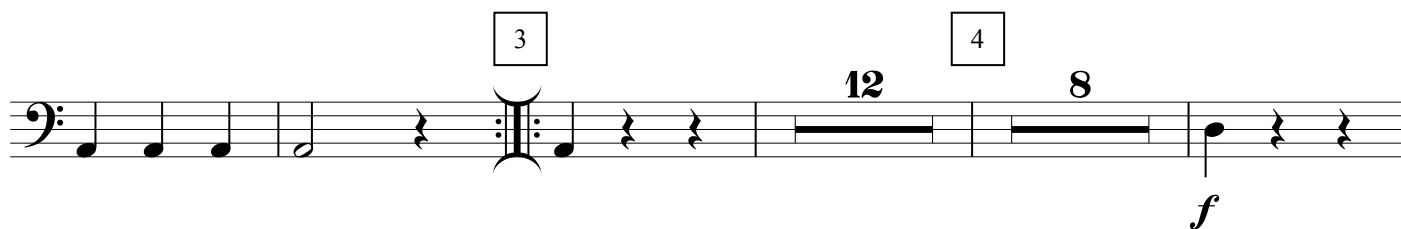
(Allegro)

I. 

*f*





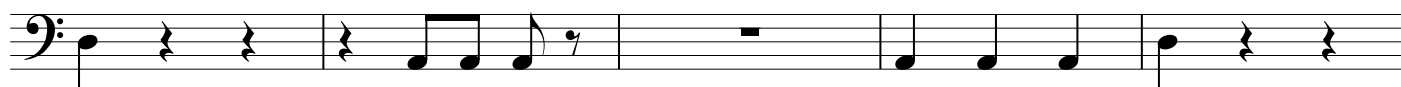


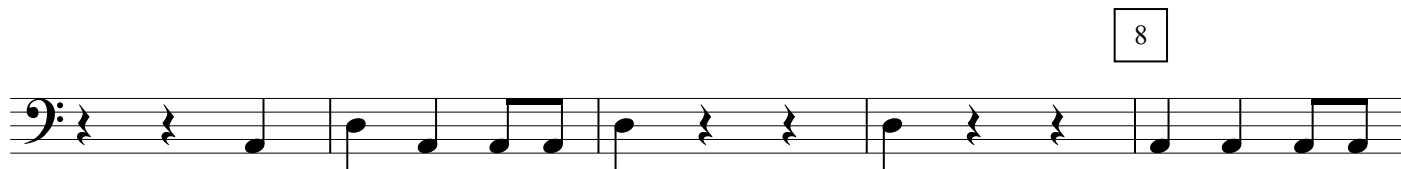
*f*



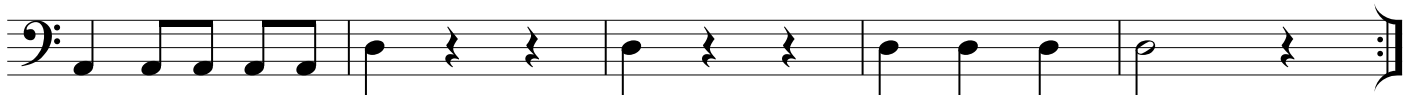


*f*





8



II. **Andante**

16 1 13 2 16

A musical staff in bass clef with a 2/4 time signature. It consists of three measures, each containing a whole note. The first measure is labeled '16', the second '13', and the third '16'. Above the first and second measures are boxes containing the number '1'. A double bar line with repeat dots is placed at the end of the second measure.

III. **Menuetto**

*f* 5 1 2

A musical staff in bass clef with a 3/4 time signature. It contains several measures, including rests and notes. A measure with a whole note is labeled '5'. Above it is a box with the number '1'. A measure with a half note is labeled '2'. A double bar line with repeat dots is placed at the end of the '5' measure.

5 *f*

A musical staff in bass clef with a whole note labeled '5' above it. The staff continues with several measures of notes and rests. A double bar line with repeat dots is placed at the end of the '5' measure.

2 Trio 3 4 10 12 10

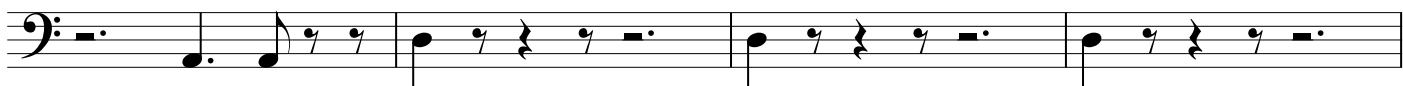
*D.C. al Menuetto*

A musical staff in bass clef with a 3/4 time signature. It features first endings labeled '2', '3', and '4' above measures. A section labeled 'Trio' begins with a new time signature of 3/4. Measures in the Trio section are labeled '10', '12', and '10'. A double bar line with repeat dots is at the end.

(Allegro)

IV. *f*

A musical staff in bass clef with a 12/8 time signature. It starts with a whole note labeled 'f' below it, followed by several measures of notes and rests.



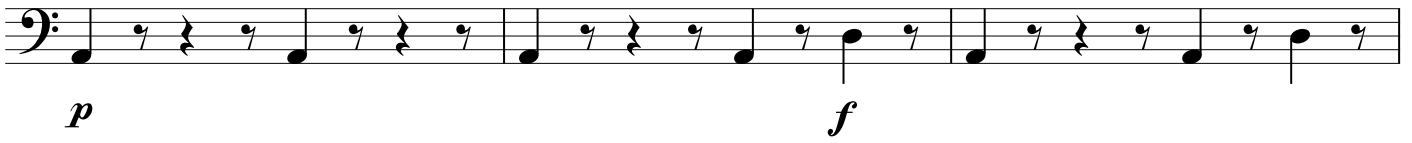
1 5

A musical staff in bass clef with a whole note labeled '5' above it. Above the first measure is a box containing the number '1'. A double bar line with repeat dots is at the end of the '5' measure.

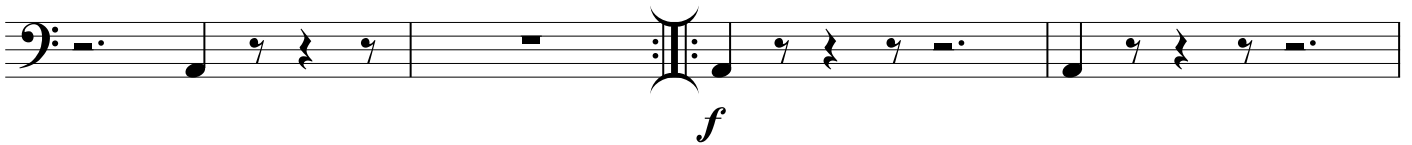
2



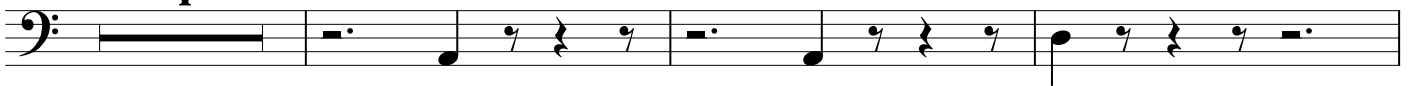
3



4



4



5



2



6

