

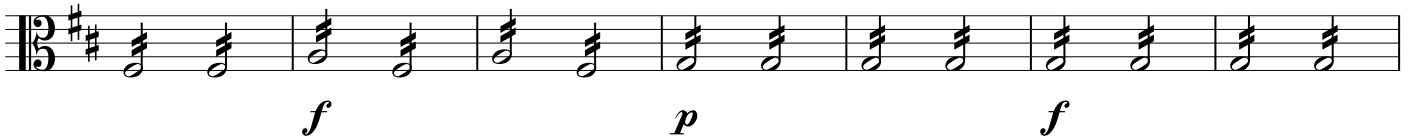
Viola

Sinfonia No 23

en Re Mayor
K. 181

Wolfgang Amadeus Mozart
Transcrip. Gory
info@gory.jazztel.es

Allegro spiritoso



1



2

The first staff of music begins with a treble clef and a key signature of one sharp (F#). It contains a sequence of notes: a quarter note G4, a quarter note A4, a quarter note B4, and a quarter note C5. This is followed by a sixteenth-note triplet of G4, A4, and B4, then another sixteenth-note triplet of G4, A4, and B4. The staff concludes with a quarter rest, a quarter note G4, and a quarter note F#4.

The second staff continues the piece with a quarter note G4, a quarter note A4, a quarter note B4, and a quarter note C5. It then features a sixteenth-note triplet of G4, A4, and B4, followed by another sixteenth-note triplet of G4, A4, and B4. The staff ends with a quarter rest, a quarter note G4, and a quarter note F#4.

The third staff begins with a quarter note G4, a quarter note A4, a quarter note B4, and a quarter note C5. It then has a sixteenth-note triplet of G4, A4, and B4, followed by another sixteenth-note triplet of G4, A4, and B4. The staff concludes with a quarter rest, a quarter note G4, and a quarter note F#4.

The fourth staff consists of a continuous sixteenth-note triplet pattern of G4, A4, and B4 throughout the entire staff.

3

The fifth staff begins with a sixteenth-note triplet of G4, A4, and B4, followed by another sixteenth-note triplet of G4, A4, and B4. It then features a quarter note G4, a quarter note A4, a quarter note B4, and a quarter note C5. The staff concludes with a quarter rest, a quarter note G4, and a quarter note F#4. A dynamic marking of *p* (piano) is placed below the final note.

The sixth staff starts with a sixteenth-note triplet of G4, A4, and B4, followed by a quarter note G4, a quarter note A4, and a quarter note B4. It then has a quarter rest, a quarter note G4, and a quarter note F#4. The staff concludes with a sixteenth-note triplet of G4, A4, and B4.

The seventh staff begins with a sixteenth-note triplet of G4, A4, and B4, followed by a quarter note G4, a quarter note A4, and a quarter note B4. It then has a quarter rest, a quarter note G4, and a quarter note F#4. The staff concludes with a sixteenth-note triplet of G4, A4, and B4. A dynamic marking of *f* (forte) is placed below the first note.

4

The eighth staff begins with a sixteenth-note triplet of G4, A4, and B4, followed by a quarter note G4, a quarter note A4, and a quarter note B4. It then has a quarter rest, a quarter note G4, and a quarter note F#4. The staff concludes with a sixteenth-note triplet of G4, A4, and B4.

f *f* *f* *p*

f *p*

f *p* *f*

f *p* *f*

5

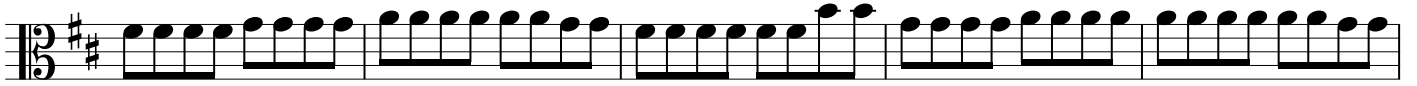
p

f

f

f

6

*p**f*

Musical staff in bass clef with a key signature of one sharp (F#). The staff contains a sequence of notes with rests. Dynamics markings *f* and *p* are placed below the notes.

Andantino grazioso *tr*

Musical staff in bass clef with a key signature of one sharp (F#). The staff contains a sequence of chords and trills. A trill marking *tr* is present above the final chord.

1

Musical staff in bass clef with a key signature of one sharp (F#). The staff contains a sequence of eighth notes.

Musical staff in bass clef with a key signature of one sharp (F#). The staff contains a sequence of eighth notes.

2

Musical staff in bass clef with a key signature of one sharp (F#). The staff contains a sequence of notes with dynamics markings *fp* and *p*. A trill marking *tr* is present above the final chord.

3

Musical staff in bass clef with a key signature of one sharp (F#). The staff contains a sequence of chords and trills. A trill marking *tr* is present above the final chord.

Musical staff in bass clef with a key signature of one sharp (F#). The staff contains a sequence of eighth notes.

Musical staff in bass clef with a key signature of one sharp (F#). The staff contains a sequence of eighth notes.

Presto assai

fp *fp* *fp* *fp* *f*

8
f

1
p *f*

2
16
p *tr fp* *tr fp* *tr fp*

tr fp *tr fp* *tr fp* *f*

