

Trompa en La

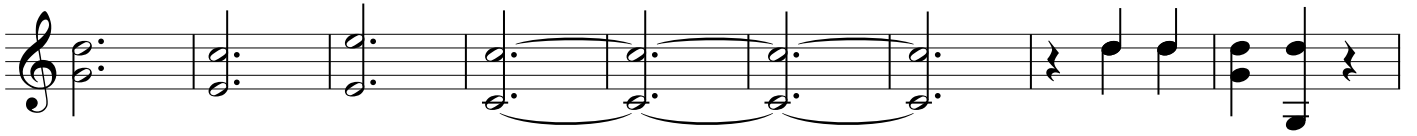
# Sinfonia No 21

en La Mayor  
K. 134

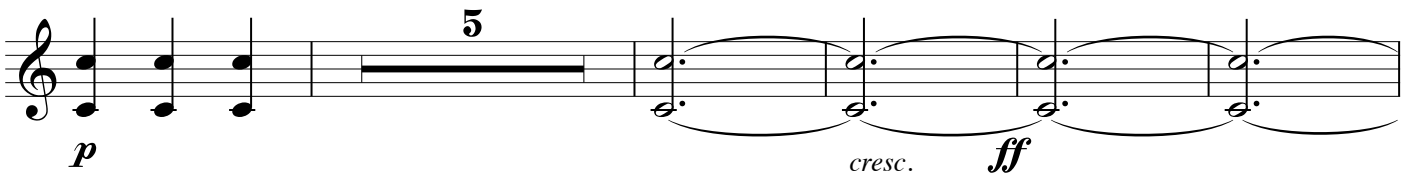
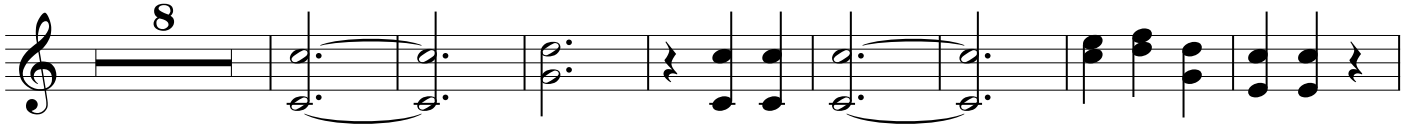
Wolfgang Amadeus Mozart  
Transcrip. Gory  
info@gory.jazztel.es

Allegro

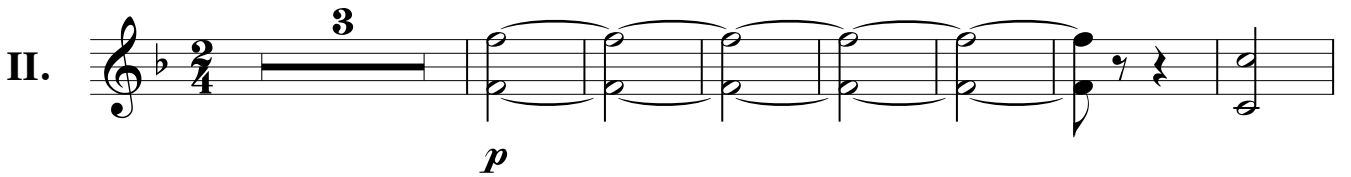
I.



4



Andante



1

*p*

4

2

3

*p*

6

*p*

*cresc. ff*

3

*p*

MENUETTO

III.

1

4

1.

2.

Trio

Musical notation for the Trio section, measures 8-14. The key signature has one flat (B-flat) and the time signature is 3/4. Measure 8 is marked with a box containing the number 2. Measure 14 is marked with a box containing the number 7. The section concludes with the instruction *Menuetto D.C.*

Allegro

IV. Musical notation for the Allegro section, measures 10-14. Measure 10 is marked with a box containing the number 10. Measure 14 is marked with a box containing the number 4.

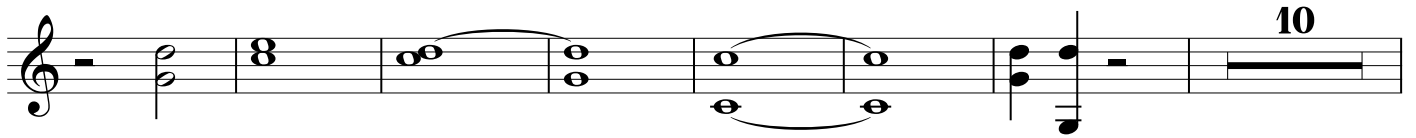
Musical notation for the Allegro section, measures 15-19. The notation consists of chords and rests.

Musical notation for the Allegro section, measures 20-24. Measure 20 is marked with a box containing the number 1. Measure 21 is marked with a box containing the number 11. Measure 22 is marked with *a 2.* Measure 24 is marked with a box containing the number 2.

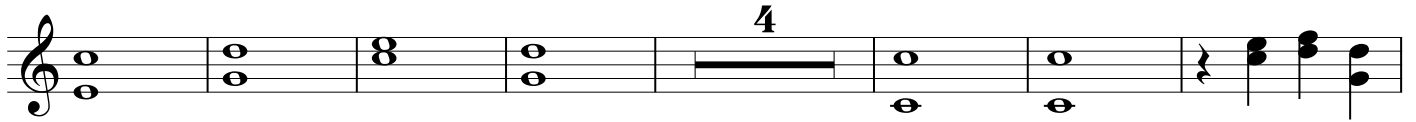
Musical notation for the Allegro section, measures 25-29. The notation consists of chords and eighth notes.

Musical notation for the Allegro section, measures 30-34. Measure 34 is marked with a box containing the number 2. The section concludes with a double bar line and repeat dots.

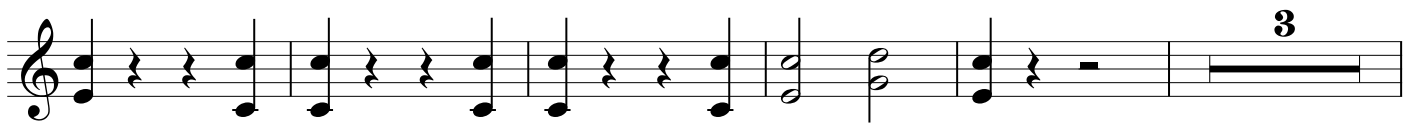
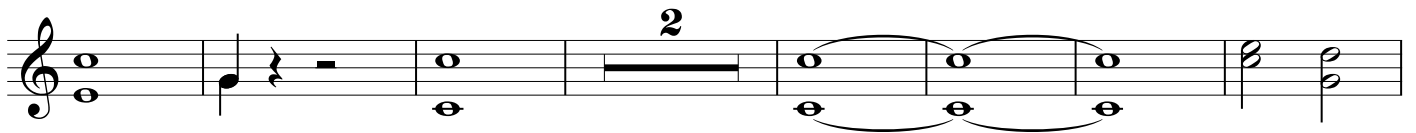
Musical notation for the Allegro section, measures 35-39. Measure 36 is marked with a box containing the number 2. The notation features long horizontal lines connecting notes across measures.



3



4



5

