

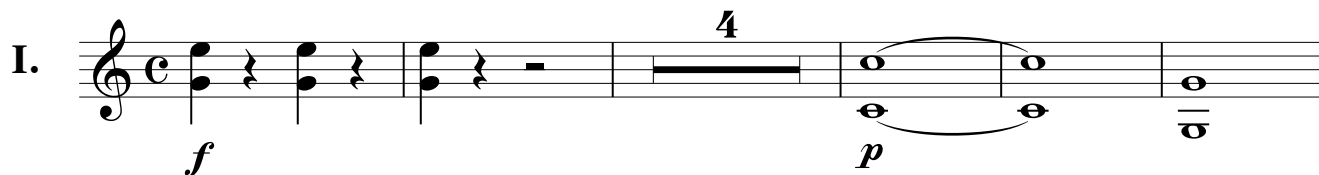
Trompa
en Re

Sinfonia No 20

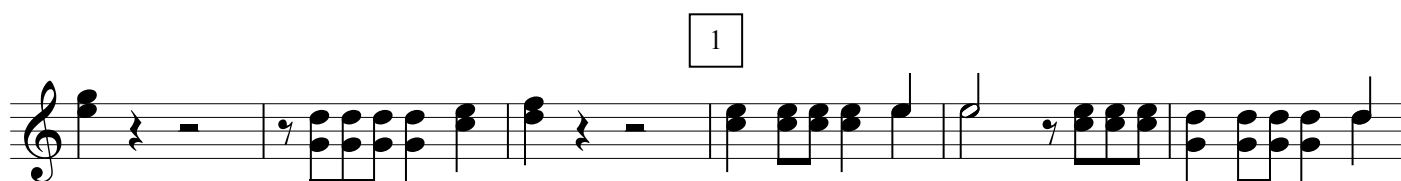
en Re Mayor
K. 133

Wolfgang Amadeus Mozart
Transcrip. Gory
info@gory.jazztel.es

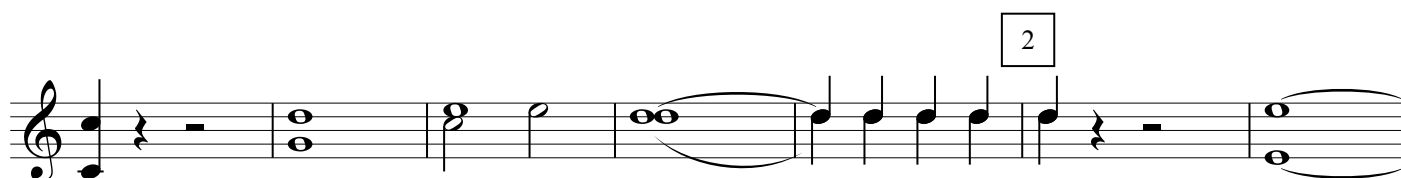
Allegro

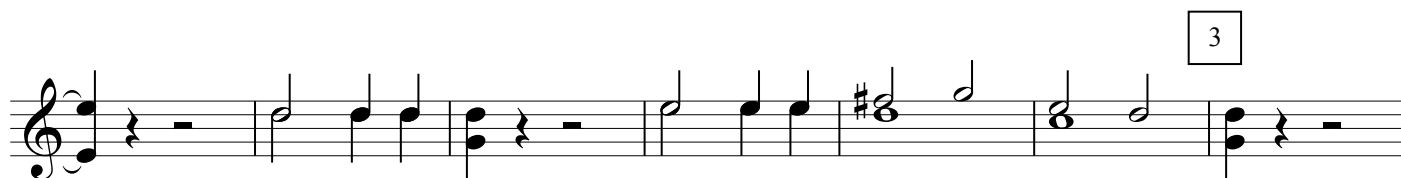
I. 

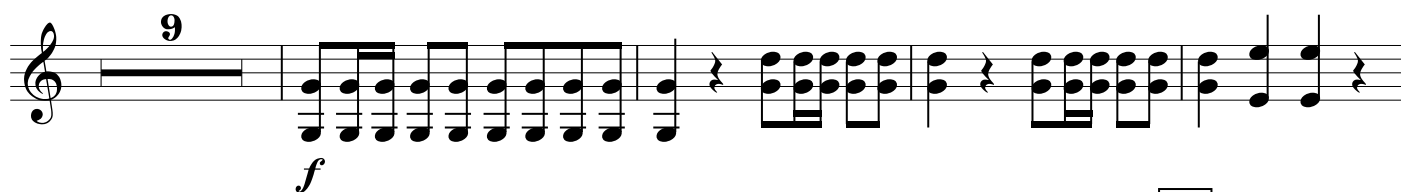




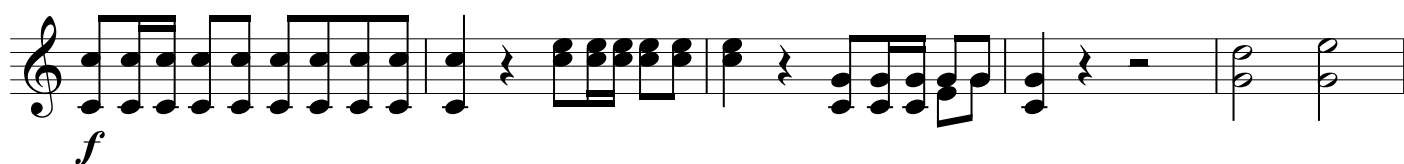
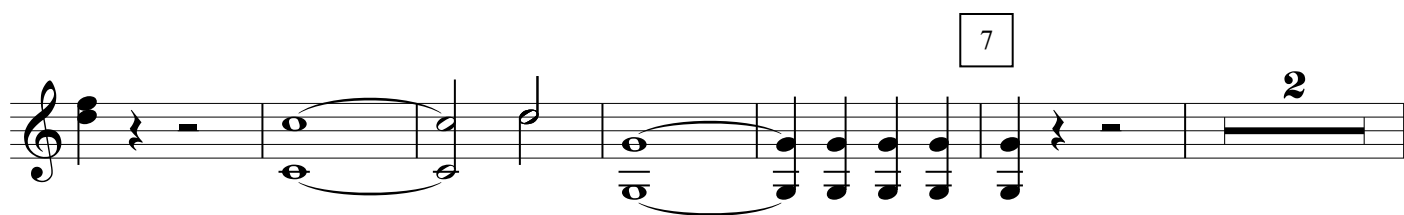
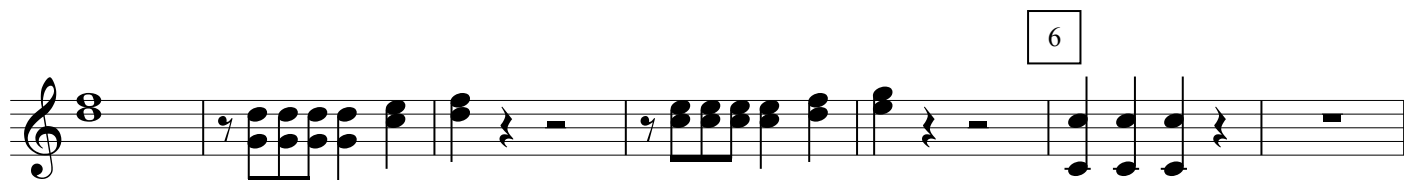
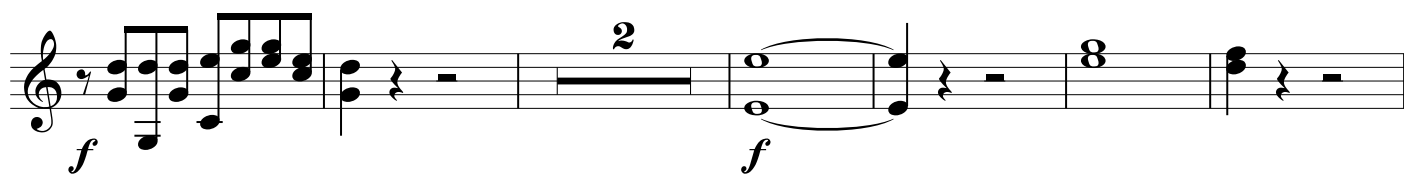
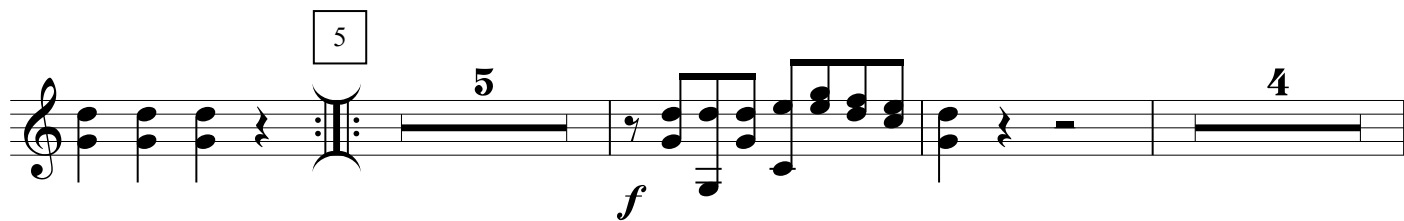
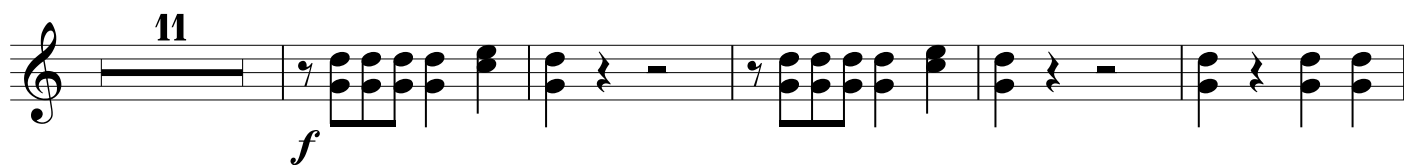












Musical staff with notes and a box containing the number 8.

Musical staff with notes and a dynamic marking *f*.

Musical staff with notes, a box containing the number 9, and a dynamic marking *f*.

Musical staff with notes and a dynamic marking *f*.

Musical staff with notes and a dynamic marking *f*.

Andante

Musical staff with measures 27, 19, 27, 13, 14, and 5, and boxes containing numbers 1, 2, 3, and 4.

MENUETTO

Musical staff with notes, a dynamic marking *f*, and a box containing the number 2.

Musical staff with notes, a dynamic marking *f*, and a box containing the number 1.

2 2 Trio 3
12 18
f *D.C. al Menuetto*

(Allegro)
IV. $\frac{12}{8}$ 4 *f*

5 1 2 *f*

(p)

2 *f*

3

9

2

4

f

4

5

f

7

f

(p)

6

f

The image shows a musical staff with a treble clef. The notation consists of a series of chords, each with a grace note (a small '7' above the note). The first four measures each contain a pair of chords. The fifth measure begins a first ending, marked with '1.' above the staff, and ends with a repeat sign. The sixth measure begins a second ending, marked with '2.' above the staff, and ends with a double bar line. The notes in the chords are: G4, A4, B4, C5 in the first measure; G4, A4, B4, C5 in the second; G4, A4, B4, C5 in the third; G4, A4, B4, C5 in the fourth; G4, A4, B4, C5 in the fifth; G4, A4, B4, C5 in the sixth.