

Violoncello  
y Contrabajo

# Sinfonía no 10

en Sol Mayor K. 74

Wolfgang Amadeus Mozart  
Transcrip. Gory  
info@gory.jazztel.es

Allegro

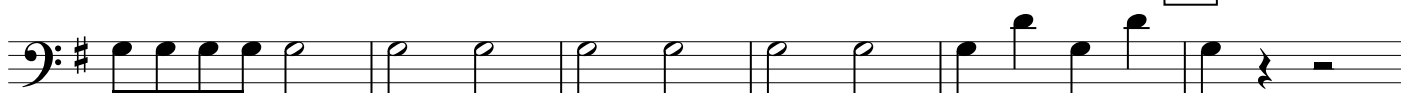


*(f)*

1



2



3



7

*f*

4



*f*



*f*

*p*

5



*f*

First staff of music in bass clef with a key signature of one sharp (F#). It contains four measures of eighth notes: G2, A2, B2, C3; C3, D3, E3, F#3; G3, A3, B3, C4; C4, B3, A3, G3.

6

7

Second staff of music. It starts with three measures of eighth notes (G2, A2, B2), followed by a measure with a whole note G2. The third measure has a half note G2 and half note F#3. The fourth measure has a quarter rest. The fifth and sixth measures are whole rests. The seventh measure has a quarter note G2. The eighth measure has a quarter rest. Dynamics: *cresc.* under the first half note, and *f* under the second half note.

Third staff of music. It has two measures of whole rests, followed by a quarter rest, and then two measures of eighth notes: C3, D3; D3, E3; E3, F#3; F#3, G3.

Fourth staff of music. It has two measures of eighth notes: G2, A2; A2, B2; B2, C3; C3, D3. This is followed by four measures of a continuous eighth-note sequence: G2, A2, B2, C3; C3, D3, E3, F#3; F#3, G3, A3, B3; B3, C4, B3, A3.

8

Fifth staff of music. It contains four measures of eighth notes: G2, A2, B2, C3; C3, D3, E3, F#3; F#3, G3, A3, B3; B3, C4, B3, A3.

Sixth staff of music. It starts with a quarter note G2, followed by a quarter note A2, a quarter rest, and a quarter note B2. The third measure has a quarter note G2, a quarter note A2, and a quarter note B2. The fourth measure has a quarter rest. The fifth and sixth measures are eighth notes: C3, D3; D3, E3; E3, F#3; F#3, G3.

9

7

Seventh staff of music. It starts with four measures of eighth notes: G2, A2, B2, C3; C3, D3, E3, F#3; F#3, G3, A3, B3; B3, C4, B3, A3. The fifth measure has a quarter note G2 and a quarter rest. The sixth measure has a whole note G2.

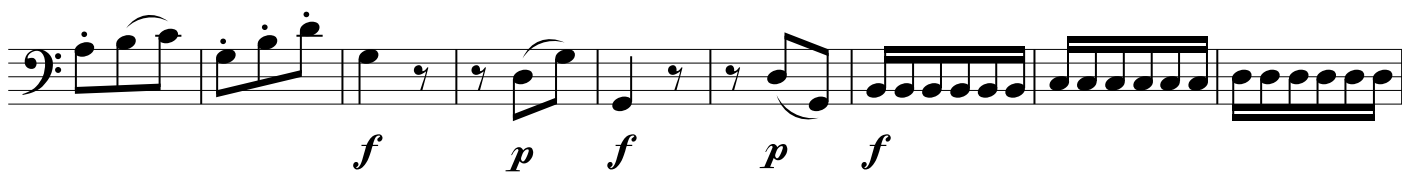
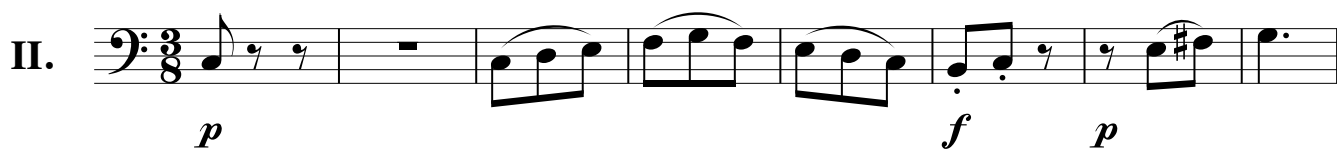
Eighth staff of music. It starts with two measures of eighth notes: G2, A2; A2, B2; B2, C3; C3, D3. The third measure has a quarter note G2 and a quarter note F#3. The fourth measure has a quarter note G2, a quarter note F#3, and a quarter note E3. The fifth and sixth measures are eighth notes: C3, D3; D3, E3; E3, F#3; F#3, G3. Dynamics: *f* under the first measure.



10



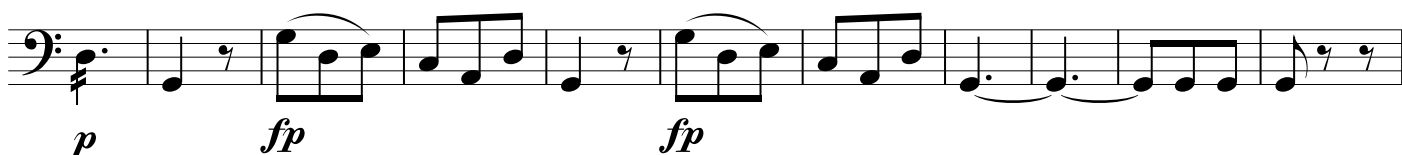
(Andante)

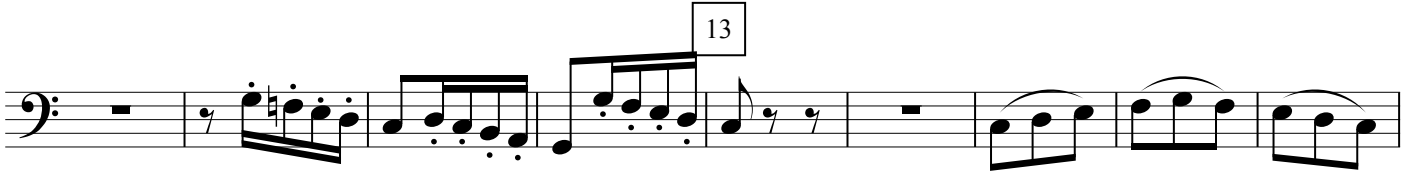


11

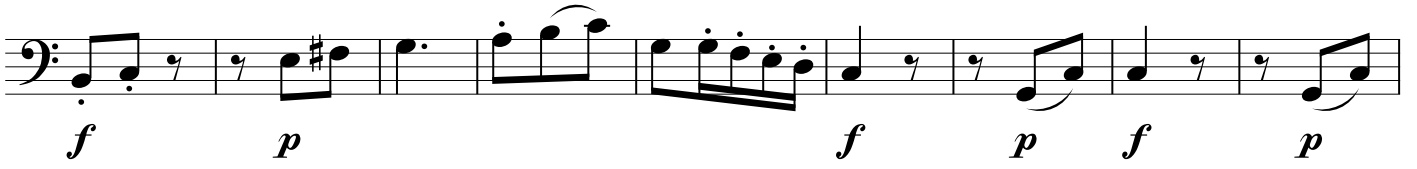


12

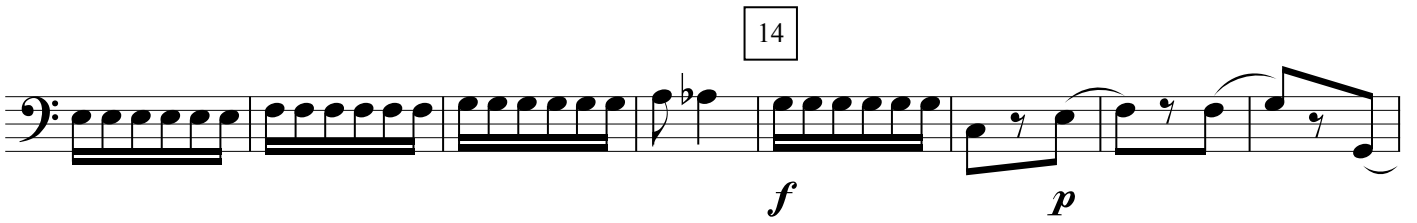




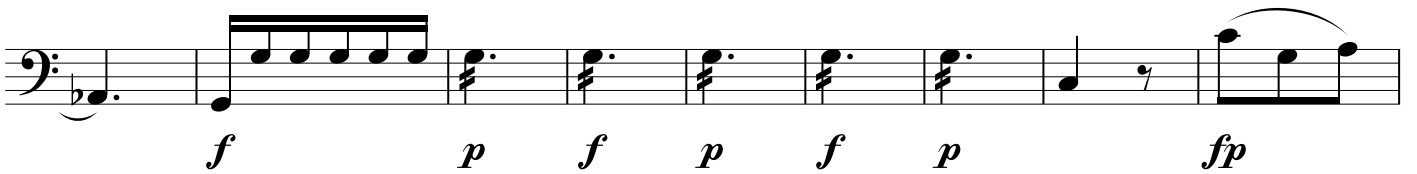
Musical staff in bass clef. Measure 13 is boxed. The staff contains a sequence of eighth and sixteenth notes, some beamed together, and rests.



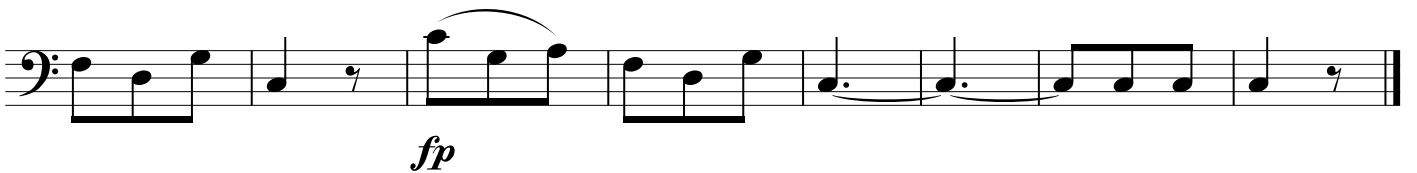
Musical staff in bass clef. Dynamics markings *f* and *p* are placed below the notes. The staff contains a sequence of eighth and sixteenth notes, some beamed together, and rests.



Musical staff in bass clef. Measure 14 is boxed. Dynamics markings *f* and *p* are placed below the notes. The staff contains a sequence of eighth and sixteenth notes, some beamed together, and rests.

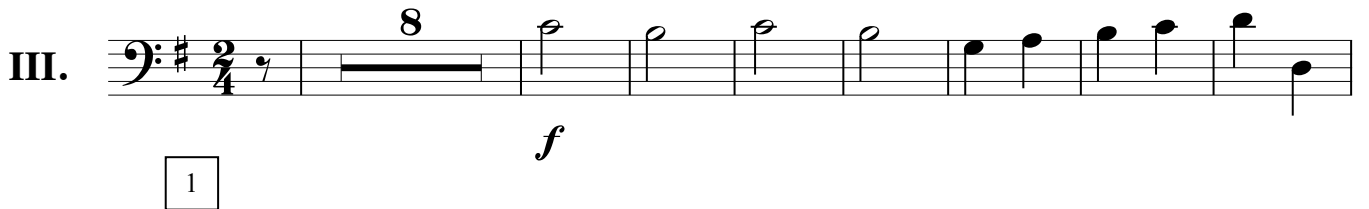


Musical staff in bass clef. Dynamics markings *f*, *p*, *f*, *p*, *f*, *p*, and *fp* are placed below the notes. The staff contains a sequence of eighth and sixteenth notes, some beamed together, and rests.



Musical staff in bass clef. Dynamic marking *fp* is placed below the notes. The staff contains a sequence of eighth and sixteenth notes, some beamed together, and rests.

Allegro



Musical staff in bass clef, marked III. Time signature is 2/4. Measure 1 is boxed. Dynamic marking *f* is placed below the notes. The staff contains a sequence of eighth and sixteenth notes, some beamed together, and rests.



Musical staff in bass clef. Dynamic marking *f* is placed below the notes. The staff contains a sequence of eighth and sixteenth notes, some beamed together, and rests.



Musical staff in bass clef. Measure 2 is boxed. Dynamic marking *f* is placed below the notes. The staff contains a sequence of eighth and sixteenth notes, some beamed together, and rests.

