

Timbales
(Re y La)

Sinfonía No 7

en Re Mayor K. 45

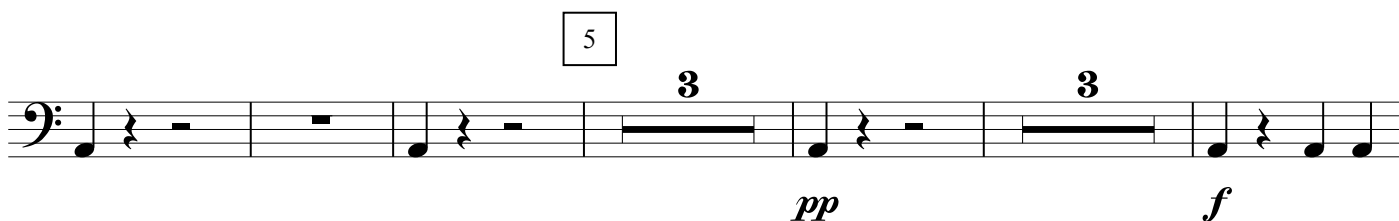
Wolfgang Amadeus Mozart
Transcrip. Gory
info@gory.jazztel.es

Allegro

I.  1

 2 7

3  4

 5 3 3
pp f

6  4
f

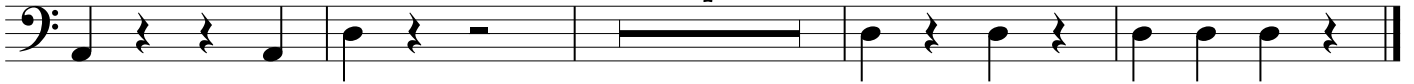
7  6 8

 9

 2

10

7



f

Andante

1

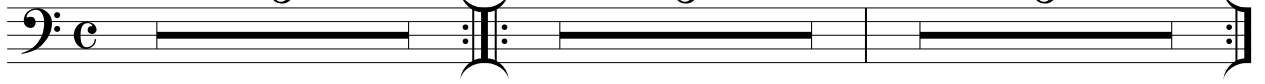
2

8

8

8

II.



MENUETTO

1

7

5

III.



f



2

TRIO

3

5

8

12



f

f

Menuetto D.C.

FINALE

4

IV.



f

f

1

2

4

16

3



3

4

4



5

2

4

7

4



f

A musical staff in bass clef containing eight measures. The notes and fingerings are as follows:
Measure 1: A whole note with fingering 2.
Measure 2: A quarter note followed by a quarter rest.
Measure 3: A whole note with fingering 4.
Measure 4: A quarter note followed by a quarter rest.
Measure 5: A whole note with fingering 7.
Measure 6: A quarter note followed by a quarter rest.
Measure 7: A whole note with fingering 3.
Measure 8: A quarter note followed by a quarter rest.
Above the staff, the numbers 6 and 7 are enclosed in boxes, positioned over the 4th and 6th measures respectively.

A musical staff in bass clef containing seven measures. The notes and fingerings are as follows:
Measure 1: A whole note with fingering 7.
Measure 2: A quarter note followed by a quarter rest.
Measure 3: A whole note with fingering 2.
Measure 4: A quarter note followed by a quarter rest.
Measure 5: A quarter note followed by a quarter rest.
Measure 6: A quarter note followed by a quarter rest.
Measure 7: A quarter note followed by a quarter rest, ending with a repeat sign.