



First musical staff in bass clef with a key signature of one flat. It contains a sequence of eighth notes followed by quarter notes with rests.

4

Second musical staff in bass clef, continuing the sequence of eighth and quarter notes.

Third musical staff in bass clef, featuring eighth notes and quarter notes with some accidentals.

Fourth musical staff in bass clef, starting with a repeat sign and containing eighth and quarter notes.

5

Fifth musical staff in bass clef, featuring a dynamic marking *p* followed by *f*. It includes a long note and eighth notes.

Sixth musical staff in bass clef, featuring a dynamic marking *p* followed by *f*. It includes a long note and eighth notes.

Seventh musical staff in bass clef, featuring a dynamic marking *p* followed by *f*. It contains a sequence of eighth notes.

6

7

Eighth musical staff in bass clef, featuring a dynamic marking **11** and a sequence of eighth notes.

Ninth musical staff in bass clef, featuring a sequence of eighth notes.

8

Andante

II. *pizz.*

*mf*

1

2

3



4



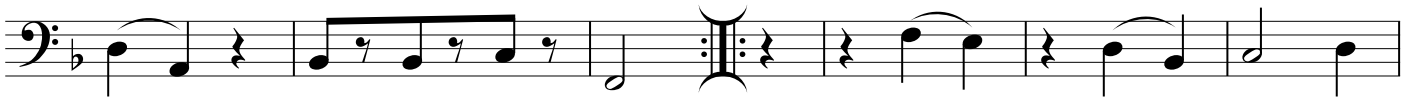
MENUETTO

III.



*f*

1



TRIO



2



*p* *fp* *p* D.C. al Menuetto

Allegro

IV. *f*

1

2

*p*

3

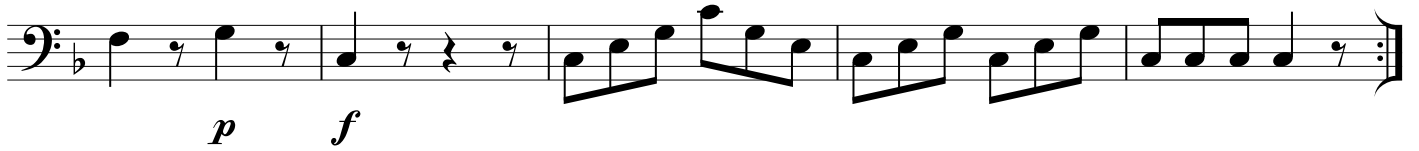
*f*

4

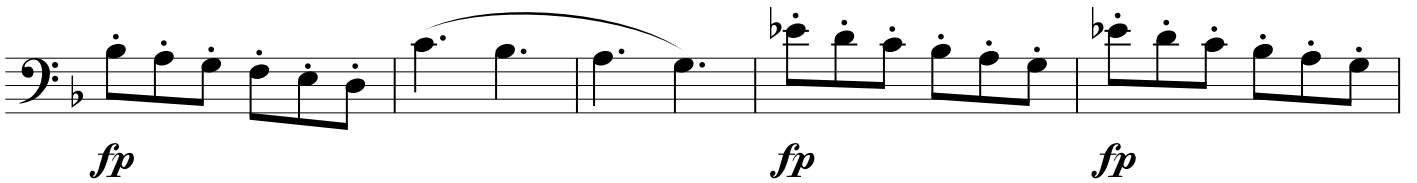
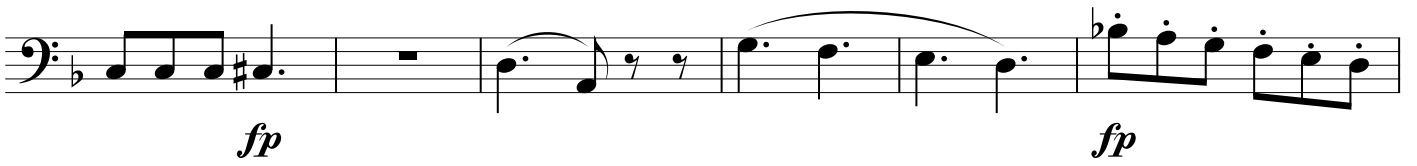
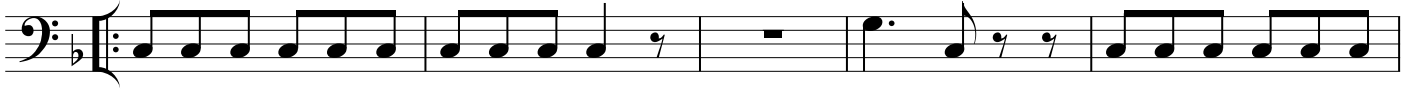
*p*

5

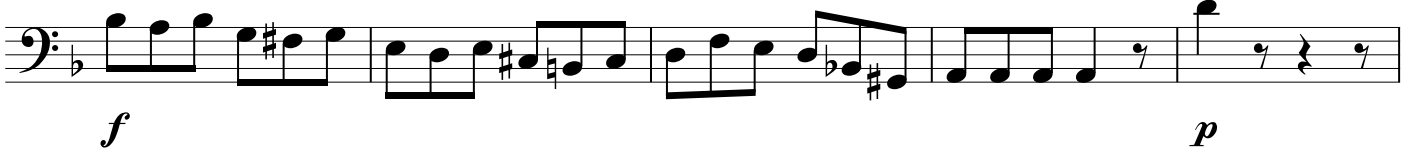
*f**p**f*



6



7



8



9

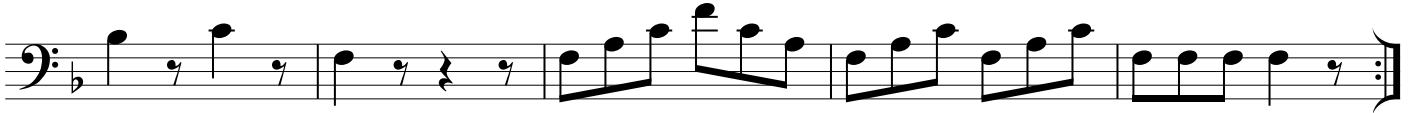




10

*p*

11

*f**p**f**p**f*