

Beethoven — Symphony No. 9

Timpani

4

in

Molto vivace $\text{♩} = 116$

Archi 1 1 Solo 2 13
G. P. G. P. *sf* Orch. *p* G. P. Viol. II

25 C.-B. 25 Viol. I **A** 1 1
ff

62 1 1 1 2 3 **B** 16
f

93 **C** 12 Legni 4 **D**
Legni Fag. I

120 26 Fag. I 3 Archi 3 3 15 Legni
G. P. G. P.

177 Ritmo di tre battute Fag. I 6 Fl. I 4 Solo **E** 2
f

199 2 2 3 16 Ob. I 7 Vcllo., C.-B.
dim. Ritmo di quattro battute

237 8 Viol. I **F** 7 3 3 1 2
pp *cresc.* *più cresc.* *f*

266 3 4 **G** 5 6 7 8 3 3 3 1 2 3 4
più f *ff*

277 5 6 7 8 9 10 11 6 1 2 3 4
f *f* *f* *f*

294 5 6 **H** 20 3 6 **I** Legni 6
f *f* Viol. I Cor. I *p* *p* Fag. I

338 3 3 5 **K** Viol. I 5
ff

364 1 1 1 1 1 7
f *f* *f* *f* *f* *pp*

Beethoven — Symphony No. 9

Timpani

383 1 3 1. 5 3 2. *G. P. pp* *Archi p cresc.*

391 3 Legni Vcllo., C.-B. 6 1 1 1 *stringendo il tempo* *cresc.*

412 2 4 1. 2. Vcllo. Viola 14

438 35 M Viol. I 12 Viol. I 1. 2. Fag. I 37

530 1 1 Solo Orch. 2 Viol. II 13 *poco rit.* *Molto vivace* *d. = 116* *Archi* *G. P.* *f* *pp* *G. P.*

555 C.-B. 26 Viol. I N 1 1 1 *f* *f*

594 1 1 2 3 O 16 Legni *f* *f* *f* *f*

625 13 Fag. I, II 10 P Fag. I 23 3 *G. P.*

681 3 3 Archi 15 Legni Ritmo di tre battute 6 *G. P.*

716 Fl. I 4 Fl. I Solo Q 2 2 2 3 *f*

738 25 Vcllo., C.-B. 8 Viol. I R 7 3 *dim.* *pp* *cresc.*

780 3 1 2 3 4 S 5 6 7 8 3 3 3 *più cresc.* *f* *più f* *ff*

803 1 2 3 4 5 6 7 8 9 10 11 6

Beethoven — Symphony No. 9

6

Timpani

820 1 2 3 4 5 6 [T] 33 [U] Archi Legni

866 3 3 5 6 [V] Fag. I

892 1 1 1 1 1 7

912 1 3 Archi Legni Coda Vcllo., C.-B. 6

934 1 1 1 Presto 2 7 1 2

f *f* *f* *f* *f* *f* *pp* *G. P.* *p cresc.* *stringendo il tempo* *Archi cresc.* *G. P.*

in

Adagio molto e cantabile $\text{♩} = 60$

14 Fag. I Viol. I 4 Viol. II

25 Andante moderato $\text{♩} = 63$ 15 12 Tempo I Viol. I Clar. I

57 Andante moderato 4 16 Fag. I

82 Adagio 12 Clar. I Lo stesso tempo 12 8 *p* *sempre p*

101

106

111 *cresc.* *dim.* *p*

116 *cresc.* *dim.* *p* *più p* *pp* *cresc.*

121 1 [A] 9 [B] 6 Solo *f* *sf* *p*

Beethoven — Symphony No. 9
Timpani

140 *ff* *p*

150 *cresc.* *f* *p* *sempre pp*

154 *cresc.* *f* *fp* *p* *f* *pp*

in $\frac{3}{4}$ **Presto** $\text{♩} = 96$ *ff* *Vcllo., C.-B.*

14 *ff* **Solo** 1 2 3 4 5 6 2

Vcllo., C.-B. **Allegro ma non troppo** $\text{♩} = 88$ *p* *pp*

28 *Vcllo., C.-B.* *Viol. I* **Tempo I** *Vcllo., C.-B.*

38 **Tempo I** *f* *Vcllo. C.-B. rit.* **poco Adagio** *Vivace* *Fag. II.* **Tempo I** *Vcllo., C.-B.*

63 **Adagio cantabile** *Fag. I.* **Tempo I Allegro** *Vcllo., C.-B.* **Allegro assai** $\text{♩} = 80$ *Fag. I.* **Tempo I Allegro** *Vcllo., C.-B.*

83 *f* *f* *f* *ff* **Allegro assai** $\text{♩} = 80$ *Vcllo., C.-B.*

94 46 **A** *Viol. I* 20 *Viol. I* **B**

166

173

180

187 **C** 3

Beethoven — Symphony No. 9

Timpani

8

196 *poco riten.*
2 *Viol. I*

205 *poco Adagio* *Tempo I* *Solo* *Presto*
f *ff*

216 *Recit. Bariton*
8 3
O Freun- - - - - ge - neh-me-re an - stimmen, *f* *colla voce* *p* *f*

235 *Bariton ad lib.* *Allegro assai* *Fag. I* *Ob. I*
14 *f*

256 *f* **D**

263 *scmpre f* 16

285 *f* **E** *dim.* *p*

292 *pp* **F** 7 *p*

305 1 2 3 4 5 6 7 *f*

313 **G** 1 2 3 4 5

321 1 1 *ff* *ff* *ff* *molto ten.* *p*

331 *Allegro assai vivace alla Marcia* *♩ = 84*
Fag. I, Gr. Cassa 1 1 22 **H** *Fl. picc.* 30

G. P. G. P.

391 *Fl. picc.* 38 **K** 59 **L** *Vello. C.-B.* 46

Viol. II

541 *Archi* **M** *ff*

Beethoven — Symphony No. 9

Timpani

550



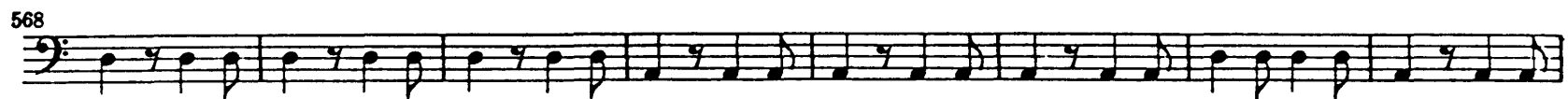
Musical staff for measures 550-557, featuring a rhythmic pattern of eighth notes.

558



Musical staff for measures 558-567, including a dynamic marking of *ff* and a fermata over the final measure.

568



Musical staff for measures 568-575, continuing the rhythmic pattern.

576



Musical staff for measures 576-585, including a dynamic marking of *ff* and a fermata over the final measure.

586



Musical staff for measures 586-594, including dynamic markings of *sf* and a fermata over the final measure.

595

Andante maestoso $\text{♩} = 72$

Vcllo., C.-B.

14

N

Vcllo., C.-B.

5

9

Adagio ma non troppo, ma divoto $\text{♩} = 60$

17

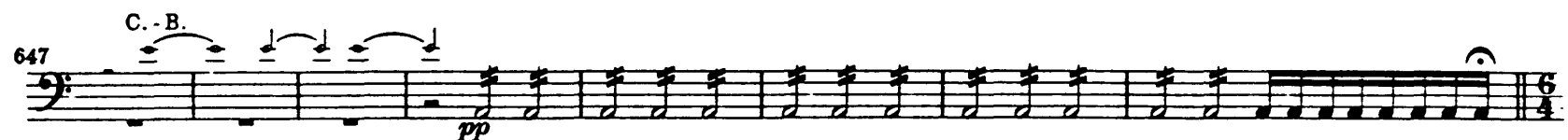
Clar. I



Musical staff for measures 595-646, showing a change in tempo and dynamics, with various instrument markings.

647

C.-B.



Musical staff for measures 647-654, including a dynamic marking of *pp* and a fermata over the final measure.

655

Allegro energico, sempre ben marcato $\text{♩} = 84$

Clar. I, II

4

Tromb. Alt



Musical staff for measures 655-667, including a dynamic marking of *f*.

668

O

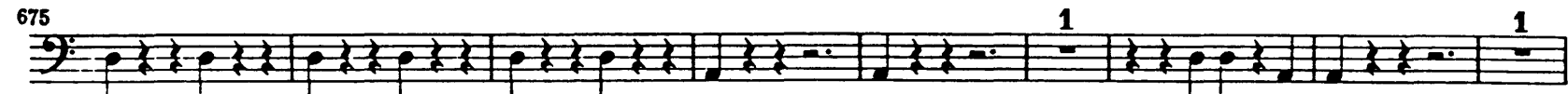


Musical staff for measures 668-674, featuring a complex rhythmic pattern.

675

1

1



Musical staff for measures 675-683, including first endings.

684

5

P

1

1



Musical staff for measures 684-696, including a dynamic marking of *p* and first endings.

697

1

2

5

Q

Pos. III

5



Musical staff for measures 697-715, including a dynamic marking of *f* and a fermata over the final measure.

716

1



Musical staff for measures 716-722, including a dynamic marking of *ff*.

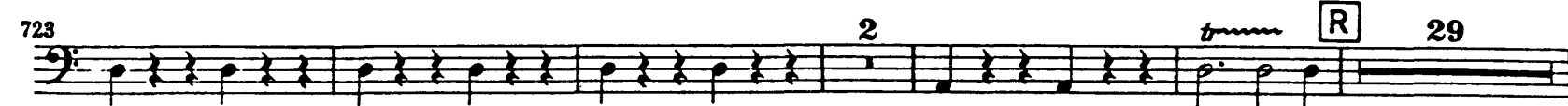
723

2

trium

R

29



Musical staff for measures 723-729, including a dynamic marking of *trium* and a fermata over the final measure.

Beethoven — Symphony No. 9

Timpani

10

Allegro ma non tanto $\text{♩} = 120$

759 *pp* *più p* *ppp* *tr* *Viol. I* 30

795 **S** *Viol. I arco* *Viol. I* *f sf f f f ff f f*

805 *f p cresc. ff f f* *Poco Adagio* *Fag. I* 2

814 *Fag. I, II* *f f f f f ff f f f p cresc. ff*

828 *f f f* *Poco Adagio* *Poco Allegro, stringendo il tempo,* *Vcllo., C.-B.* 1 4 6 1

847 *sempre più Allegro* *Prestissimo* $\text{♩} = 132$ 2 *Archi* *p cresc. ff* 2

858 1 1 2 3 4 5 6 7 *sf f f f f f f*

868 8 *f*

877 7 **T** 6 *ff ff*

899 *ff*

909 *ff ff ff p* *Maestoso* $\text{♩} = 60$

918 *f sf sf ff* *Prestissimo*

926 *sf f f f f f f* *sempre ff*

933 6 6 6 *ff*

Triangel
Große Trommel
Becken

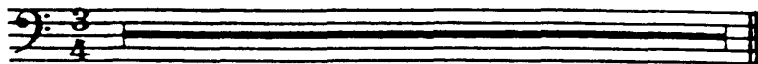
Ludwig van Beethoven
Symphony No. 9 in D Minor, Op. 125

Allegro ma non troppo,
un poco maestoso $\text{♩} = 88$



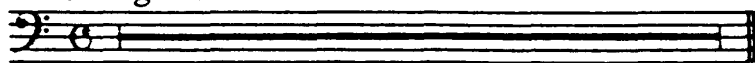
tacet

Molto vivace $\text{♩} = 116$



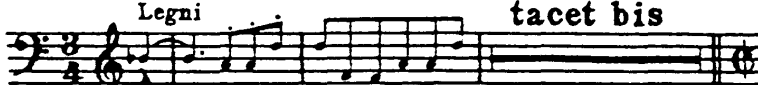
tacet

Adagio molto e cantabile $\text{♩} = 60$



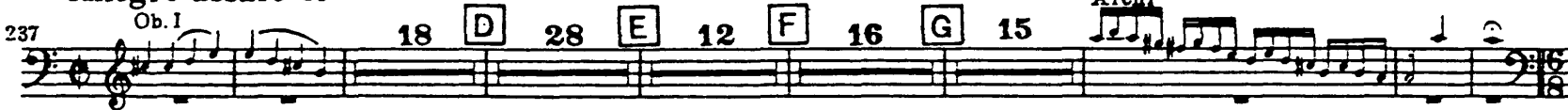
tacet

Presto $\text{♩} = 96$

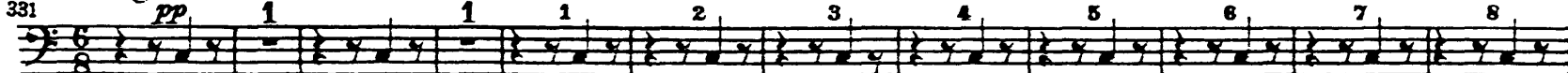


tacet bis

Allegro assai $\text{♩} = 80$



Allegro assai vivace alla Marcia $\text{♩} = 84$



Gr. Cassa G.P.

G.P.

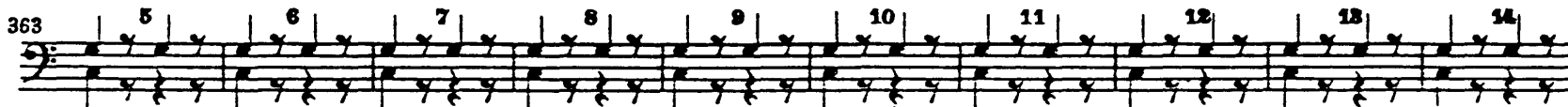
Triangel



Gr. Cassa e Cinelli



sempre pp



pp



poco cresc.

poco cresc.



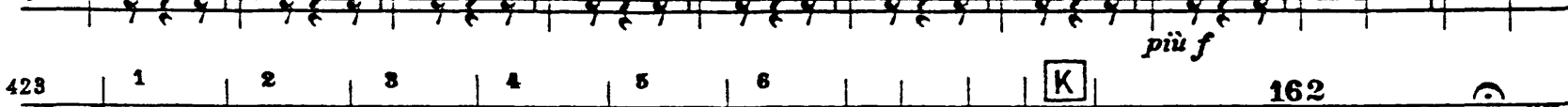
poco f



più f



più f



K

162

f

Beethoven — Symphony No. 9

Batteria

595 *Andante maestoso* $\text{♩} = 72$ Vello., C.-B. 14 **N** 16 *Adagio ma non troppo, ma divoto* $\text{♩} = 60$ 24 Viola Ottoni

655 *Allegro energico, sempre ben marcato* $\text{♩} = 84$ 14 **O** 22 **P** 16 **Q** 21 **R** 32 Archi

763 *Allegro ma non tanto* $\text{♩} = 120$ 30 **S** 15 *Poco Adagio* Legni 2 *Tempo I* Ob. I 16

832 *Poco Adagio* Chor 8 *Poco Allegro, stringendo il tempo, sempre più Allegro* Archi 4 *Prestissimo* $\text{♩} = 132$ Triangel *ff* Gr. Cassa e Cinelli

853

863

873

883 **T**

893 *ff*

902 1 2 3 4 5 6 7 8 1

912 *Maestoso* $\text{♩} = 60$ 1 *Prestissimo* 1 2

922 3 4 5 6 7 8 1 2 3

931 4 5 6 7 8 1

al. le Menschen werden